

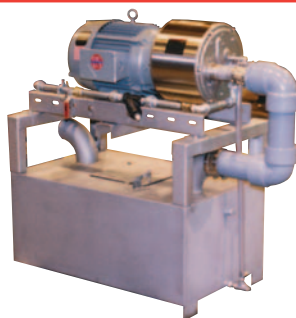
StainlessSteel, Simplex, Single-Stage Packages for Fast Installation, Low Water Usage and Quiet Operation

8



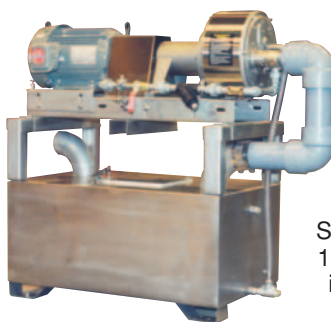
Closed-Coupled Pump & Motor Package. Water Usage is 1.5-3 Gallons per Minute. Models 101 & 102BLMS.

9



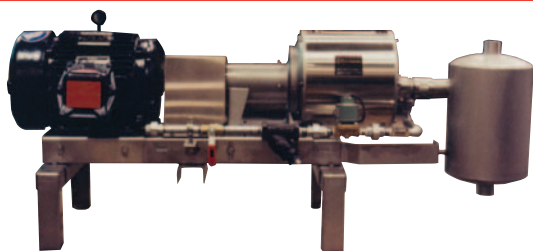
Close-Coupled Pump & Motor Package with Standard, Stainless Steel Tank for 100% Recirculation. Water Usage is 1-2 Gallons per Hour. Models 101 & 102BLRS.

11



Pedestal Pump Package with Standard, Stainless Steel Tank for 100% Recirculation. Water Usage is 1-2 Gallons per Hour. Models 501 & 502BLRS.

10



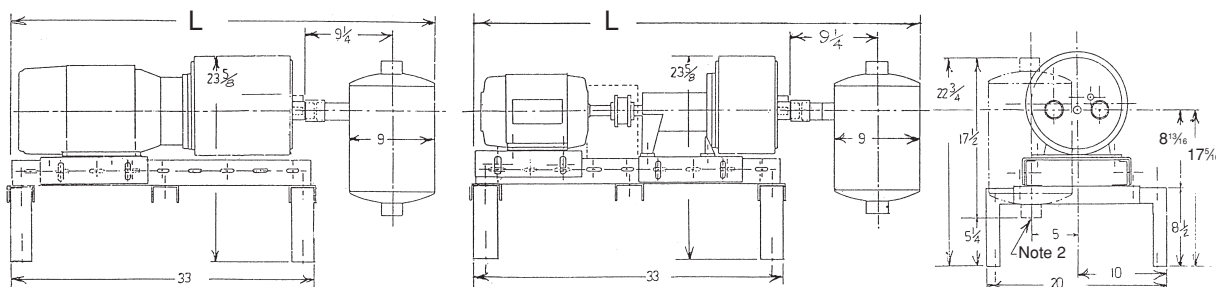
Pedestal Pump Package with Stainless Steel Coupling Guard, Coupling and Motor. Water Usage is 1.5-3 Gallons per Minute. Models 501 & 502BLMS.

Simplex, vacuum pump packages include standard, stainless steel bases with 6" legs and stainless steel separator/mufflers. Also included are service liquid lines with hand valve, strainer, solenoid valve, water flow controller and piping. Internal stainless steel pump parts are 316 and outside stainless steel parts are 304.

Water consumption is 1.5-3GPM (2GPM Nominal). This can be reduced with a water saver option which provides 50% recirculation.

Simplex, vacuum pump packages with 100% recirculation. Standard bases mount on top of a standard, 35-gallon, stainless steel, recirculation tank. Tanks include stainless steel float valve for automatic make-up water control. Pumps include a stainless steel, inlet check valve. Also included are service liquid lines with hand valve, strainer, water flow controller and piping for easy pump priming and optional primary water usage. These tanks can also be added to Lyco Wausau pump packages in the field.

All of these packages are quiet enough that you can easily carry on a conversation right next to them.



Close-Coupled Pump Packages w/o Recirculation Tank, Models 101 & 102BLMS, and w/ Recirculation Tank, Models 101 & 102BLRS (*1):

| | HP | RPM | LGTH (L) | WDTH (W) | HGHT(H) W/O REC. TNK. | HGHT(H) W/REC. TNK.(*3) | WGT | SHIP WGT | ADD FOR REC. TNK |
|------|-----|------|----------|----------|-----------------------|-------------------------|-----|----------|------------------|
| -40 | 3 | 1750 | 46% | 20 | 23% | 39% | 150 | 200 | 115 |
| -80 | 5 | 1750 | 46% | 20 | 23% | 29% | 170 | 220 | 115 |
| -120 | 7.5 | 1750 | 46% | 20 | 23% | 39% | 225 | 275 | 115 |
| -160 | 10 | 1750 | 46% | 20 | 23% | 39% | 250 | 300 | 115 |

Pedestal Pump Packages w/o Recirculation Tank, Models 501 & 502BLMS, and w/ Recirculation Tank, Models 501 & 502BLRS (*1):

| | HP | RPM | LGTH (L) | WDTH (W) | HGHT(H) W/O REC. TNK. | HGHT(H) W/REC. TNK.(*3) | WGT | SHIP WGT | ADD FOR REC. TNK |
|------|-----|------|----------|----------|-----------------------|-------------------------|-----|----------|------------------|
| -40 | 3 | 1750 | 48 | 20 | 23% | 39% | 235 | 285 | 115 |
| -80 | 5 | 1750 | 50 | 20 | 23% | 39% | 255 | 305 | 115 |
| -120 | 7.5 | 1750 | 54 | 20 | 23% | 39% | 310 | 375 | 115 |
| -160 | 10 | 1750 | 58 | 20 | 23% | 39% | 335 | 450 | 115 |

*1) Dimensions in inches and weight in pounds.

*2) Separator/muffler connections, top and bottom: 2" OD tube.

*3) Recirculation tank overall dimensions: 33(L) x 20(W) x 16(H).