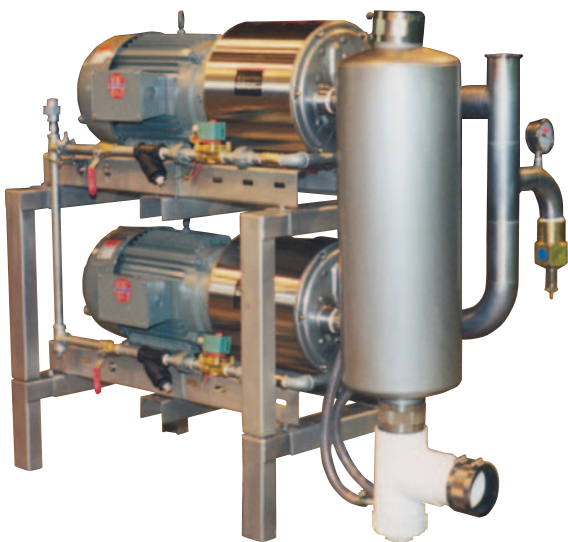
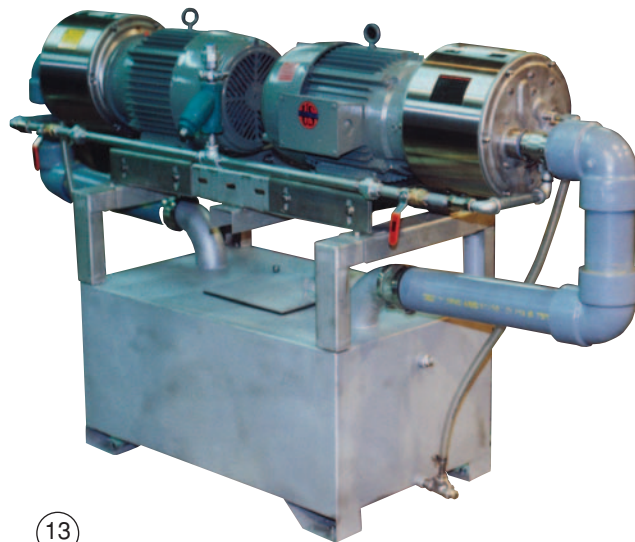


StainlessSteel, Duplex, Single-Stage Packages, up to 20HP, for Fast Installation, Low Water Usage and Quiet Operation



12

Duplex, Close-Coupled Pump & Motor Package with Optional, Stainless Steel Intake Manifold, and with 50% Recirculation Water Saver which Reduces Water Usage from 4-6 to 2-3 Gallons per Minute. Models 101 & 102DBLLMMS.



13

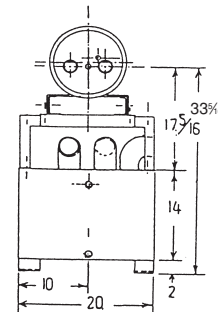
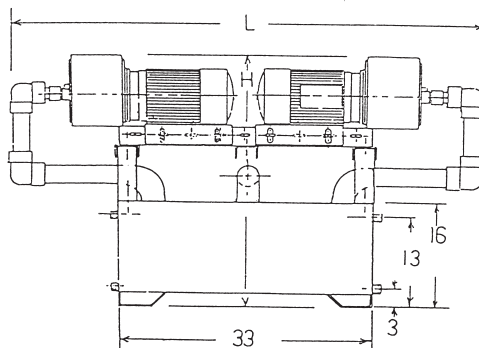
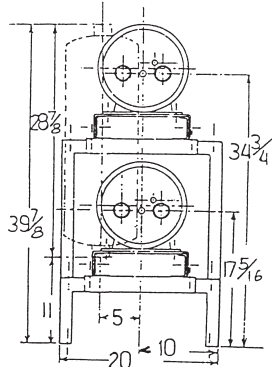
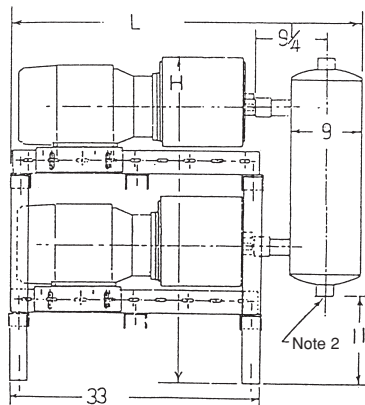
Duplex, Close-Coupled Pump & Motor Package with Standard, Stainless Steel Tank for 100% Recirculation. Water Usage is 2 to 4 Gallons per Hour. Models 101 & 102DBLRS.

Duplex, vacuum pump packages are composed of Lyco Wausau simplex packages stacked two high or mounted back to back. Standard bases are designed for this module arrangement. Packages include a stainless steel, duplex separator/muffler and service liquid line.

Water usage can be reduced with a 50% water saver option or a 100% recirculation option that uses a 35 gallon tank. Central, recirculation systems are often used in installation with multiple duplex packages.

Duplex pump packages offer stand-by maintenance advantages. First, some capacity remains available when one pump is removed for service. Second, all Lyco Wausau pumps are compact and light enough to be easily removed and returned to a maintenance shop for bench repair or to the Lyco Wausau factory. If a spare pump is kept on hand, down time is minimized and emergency repairs eliminated.

Special pricing for standby pumps is available to Lyco Wausau owners.



Vertical Duplex Package w/o Recirculation Tank Models 101 & 102DBLLMMS (*1):

HP	LGTH (L)	WDTH (W)	HGHT (H)	WGT	SHIP WGT
-80	6 (2-3)	46%	20	41	300
-160	10 (2-5)	46%	20	41	340
-240	15 (2-7.5)	46%	20	41	450
-320	20 (2-10)	46%	20	41	500

Horizontal Duplex Packages w/ Recirculation Tank Models 101 & 102DBLRS (*1):

LGTH (L)	WDTH (W)	HGHT (H)	WGT	SHIP WGT
55 1/2	20	39%	350	400
60 1/2	20	39%	375	425
74 1/2	20	39%	490	540
80 1/2	20	39%	550	600

*1) Dimensions in inches and weight in pounds.

*2) Separator/muffler connections, top and bottom: 3 1/4" OD tube.